

El Monte Middle School



Principal's Corner

Volume 4, Issue 26

March 16, 2018

Don't forget that next week is Spirit Week! Come participate in the fun activities this week.

Monday is tourist day, Tuesday is Disney Day, Wednesday is Pink Day, Thursday is Scrabble Day, and Friday is Black and Gold day. These are relatively easy dress up days, so let's show the students that we have school spirit. Thank you Miss Lopez and the leadership class for setting this awesome week up. We

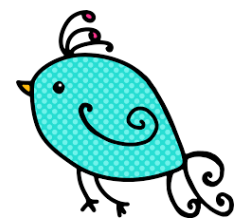
will conclude our week with a Pep Assembly on Friday. This will be a great culminating activity that will get us ready for Spring Break.

Next week is parent/teacher conferences. Conferences will take place Wednesday morning from 8:00 a.m. - 9:00 a.m. and Thursday from 2:00 p.m. - 3:30 p.m. AND 5:00 p.m. - 7:00 p.m. Lets be prepared to share grades and

solutions to parents whose students are not where they need to be academically.

On Wednesday we reviewed PBIS and spoke about discipline concerns. The PBIS committee met today and will be working again on Tuesday to address several concerns that were brought to administration's attention. We will continue working on finding solutions.

Hang on, Spring Break is around the corner!



LOBO Athletic Update

The baseball and softball teams kicked off their season this week by traveling to Kingsburg on Monday. Our home open-

er was rained out on Wednesday and has been rescheduled for April 12th.



College and Career Corner - Fresno State University

California State University, Fresno was founded as Fresno State Normal School in 1911, became a teacher's college in 1921, and has offered advanced degrees since 1949. The university's popular nickname is "Fresno State." Our mascot is the Bulldog.

Fresno State is one of the 23 campuses of the California State University, one of the largest systems of higher education in the world.

Fresno State's 388-acre main campus and its 1,011-acre University Farm are located at the northeast edge of Fresno, California, at the foot of the majestic Sierra Nevada mountain range. The surrounding San Joaquin Valley is one of the richest agricultural areas in the world, and Fresno is the fifth largest city in California. The university is within an hour's drive of many mountain and lake resorts and within a three - or four-hour drive of both Los Angeles and San Francisco.

Jordan College of Agricultural Sciences and Technology; College of Arts and Humanities; Craig School of Business; Kremen School of Education and Human Development; Lyles College of Engineering; College of Health and Human Services; College of Science and Math; College of Social Sciences; Division of Graduate Studies; Continuing and Global Education.



Calendar of Events

3/17 - Saturday School 8:00 a.m. - 12:00 p.m.

3/19- Softball/Baseball Game @ Sequoia

3/20 - PIQE 6:00 p.m. - 7:30 p.m.

3/21 - P/T Conferences 8:00 a.m. - 9:00 a.m.
New Teacher Luncheon
Softball/Baseball Game in Hanford

3/22 - Minimum Day
2:00 p.m. - 3:30 p.m. P/T Conferences
5:00 p.m. - 7:00 p.m. P/T Conferences

3/23 - Minimum Day
Pep Rally @ 12:00 p.m.

